



SIYC

Race Week at Shelter Island

August 4-6, 2017
Shelter Island, New York

SAILING INSTRUCTIONS

1 RULES

- 1.1 The regatta will be governed by the rules as defined in the *Racing Rules of Sailing* (RRS) and the US SAILING Prescriptions to the RRS. Appendix D, Team Racing Rules, will not apply.
- 1.2 The Race Week at Shelter Island website can be found at www.siyc.com/raceweek
- 1.3 **Safety Equipment Requirements:**
 - a) It is recommended that all boats be compliant with the current US Safety Requirements (USSER) US Near Shore category. These regulations are available on the US Sailing website. Competitors participate in this race at their own risk. See RRS 4, Decision to Race. The safety of a boat and her crew is the sole and inescapable responsibility of the person in charge of the boat.
 - b) Lifelines shall apply, except that yachts not normally rigged with lifelines are exempt for these requirements and the crew shall wear approved PFDs at all times while racing. This requirement does not apply to Classics, although they are strongly encouraged to wear PFDs.
 - c) In the event of a conflict between these Requirements and applicable class rules, the class rules shall apply.
- 1.4 The 2017 IRC Rules and Regulations paragraphs A, B and C shall apply to yachts racing under IRC. For the purposes of IRC Rules 21.1.5 (d) and (e), the Around-the-Island Race on Friday is considered to be a separate regatta.
- 1.5 The 2017 PHRF of ELI Regulations shall apply to yachts racing under PHRF. There are no crew weight limits.
- 1.6 The current class rules shall apply to all yachts racing as a one-design class, except as noted in these sailing instructions.
- 1.7 RRS 52 is modified to allow power operated winches for yachts sailing in non-spinnaker classes.

2 ENTRIES

- 2.1 Eligible yachts shall enter by completing online registration with the Organizing Authority on the Yacht Scoring website www.yachtscoring.com.
- 2.2 Eligibility requirements for yachts and method of entry are detailed in the Notice of Race.
- 2.3 Team entries for the Around the Island and the two day series shall be entered on the separate entry forms posted on the Race Week at Shelter Island website. There is no entry fee for either team event.

3 NOTICES, COMPETITOR INFORMATION AND SIGNALS MADE ASHORE

- 3.1 Notices, including race documents, results and amendments, shall be posted on the Official Notice Board. Jury information, including protest time limits and hearing schedules, shall be posted on the Jury Notice Board. Both boards are located at the front entrance of the Shelter Island Yacht Club. This information may also be posted on the Race Week at Shelter Island website.
- 3.2 Flag signals will be flown from the flagpole at the Shelter Island Yacht Club.
- 3.3 Any change to the sailing instructions will be posted before 0900 on the day it will take effect, except that any change to the schedule of races will be posted by 2000 on the day before it will take effect. Flag "Lima" will be flown to signify such posting.
- 3.4 When Pennant "AP" is displayed ashore, "one minute" is replaced with "not less than one hour" in Race Signal "AP".
- 3.5 Rendezvous locations for each day's racing will be displayed at 0900 on the Race Week at Shelter Island website. The Race Committee will endeavor to announce the circle assignments, format and the rendezvous locations as described in SI 4 and SI 6 at that time over VHF Channel 72. The failure to make this announcement or for a yacht to hear this announcement will not be grounds for redress. This changes rule 62.1(a).
- 3.6 After the rendezvous locations and any other regatta announcements have been made, Race Committee Signal Boats will monitor and communicate with their respective classes on the VHF channels published in SI4.4.

4 CLASSES AND IDENTIFICATION

- 4.1 The Organizing Authority will divide yachts into classes.
 - a) For the Around-the-Island Race on Friday, August 5, classes will be assigned a numeral designation and be designated the BLUE Circle.
 - b) For racing on Saturday and Sunday, classes will be assigned a numeral designation and assigned each day to one of three circles (Blue, White, Red). Note that a class may sail in different circles on different days.
- 4.2 **Format** – For racing on Saturday and Sunday, the Race Committee will notify competitors (no later than 1900 on the day before they will take effect) of the circle assignments for each class and the intended type of racing for the following day:
 - a) Navigator Races – SI Appendix B (racing using government marks and racing marks)
 - b) Drop Mark Races – SI Appendix C (drop mark racing)
- 4.3 **Scratch Sheets** - There will be separate scratch sheets for the Around-the-Island Race on Friday and for the two-day Series on Saturday and Sunday. The scratch sheets designating class assignments will be distributed at registration, posted on the Official Notice Board and posted on the regatta website.
- 4.4 **VHF Channels** - The Race Committee VHF channels for each circle are shown below:

a) Friday, August 4	Blue Circle	VHF Channel 72	(All classes in Around-the-Island Race)
b) Sat/Sun, August 5-6	Blue Circle	VHF Channel 72	
	White Circle	VHF Channel 68	
	Red Circle	VHF Channel 71	
- 4.5 **Backstay Flags** – Each yacht shall display the numeral flag corresponding to her class designation, as shown on the scratch sheet, from her backstay approximately six feet above the deck, from the warning signal of the first class on her circle until she is no longer racing. Yachts without a permanent backstay shall conspicuously display these flags in an alternate position in the aft part of the yacht.

5 SCHEDULE OF RACES

- 5.1 The Around-the-Island Race will be sailed on Friday, August 4, and is open to all eligible yachts. This race will be scored separately from the racing on Saturday and/or Sunday except as specifically requested by a one-design class to the OA. Course signals will be made on Friday, August 4, at 1200. Classes may not start in numerical order. See SI 9.2 and SI Appendix A.
- 5.2 The Two-Day Series will be held on Saturday and Sunday, August 5-6. All races will count in the Two-Day Series. The course signals will be made at 1100 for all circles on Saturday, August 5 and Sunday, August 6.
- 5.3 No warning signal shall be made after 1500 on Sunday, August 6.

6 RENDEZVOUS LOCATIONS

Circle rendezvous locations are listed below and will be designated as described in SI 3.5. See SI Appendix D – SIYC Primary Race Areas.

Gardiners Bay (“G”):

- Area “GA” - in the vicinity of RW “N” Mo(A) WHIS 1 ½ miles NE Ram Island
- Area “GB” - 2 miles South of Orient Point
- Area “GC” - 1 1/2 miles West of N”14” marking Crow Shoal

Orient Harbor (“O”)

Southold Bay (“S”)

Noyak Bay (“N”)

Peconic Bay (“P”) - One miles south of R”18”

7 CHECK-IN AND RETIREMENT

- 7.1 Prior to the warning signal for the first race each day, all yachts shall check in with the Race Committee Signal Boat by passing astern on starboard tack and announcing their sail number. The Race Committee will acknowledge by responding with the number heard.
- 7.2 Yachts retiring are requested to inform the Race Committee on their circle VHF channel or by calling (631) 749-1829.

8 COURSES & MARKS

The courses and marks for each section of the Race Week at Shelter Island are described in the SI Appendices as shown:

Around-the-Island Race (all classes)	SI Appendix A
Navigator Courses	SI Appendix B
Drop Mark Courses	SI Appendix C

9 THE START

- 9.1 Races will be started in accordance with rule 26.
- 9.2 The intended order of start for the Around-the-Island Race on Friday, August 4, will be included in the Race Committee’s announcement on VHF Channel 72 at 0900. Classes may not start in numerical order. The Race Committee may combine two or more classes into one start by displaying multiple class flags at the Warning Signal. The Race Committee will endeavor to announce the next class(es) to start on VHF Channel 72.
- 9.3 A yacht starting later than 20 minutes after her starting signal will be scored Did Not Start. This changes rule A4.
- 9.4 The starting line will be between a staff displaying an orange flag on the Race Committee Signal Boat and the course side of the port-end starting mark.
- 9.5 Yachts whose warning signal has not been made shall keep clear of the starting area.

10 INDIVIDUAL RECALLS

The Race Committee will endeavor to hail each premature starter over their respective circle VHF channel. Failure to make such an announcement, nor the timing or order of any announcement, shall not be grounds for redress. This changes rule 62.1(a).

11 THE FINISH

The finishing line will be between a staff displaying a blue flag on the Race Committee Signal Boat and the course side of the finishing mark as described in the relevant SI Appendix.

12 GOVERNMENT BUOYS

Government buoys have no required side except when specified as marks of the course. Caution should be exercised for safe navigation.

13 PENALTY SYSTEM

- 13.1 For the Around-the-Island Race on Friday, August 4, the penalty described in SI 13.3 applies for all yachts. Class Rules do not apply.
- 13.2 In racing on Saturday and Sunday, for one design classes, if class rules specify a penalty, a yacht that may have broken a rule of Part 2 while racing may take a penalty at the time of the incident as provided in her class rules.
- 13.3 For all other yachts where the class rules do not specify a penalty, rule 44.1 is changed so that a yacht has the choice between penalty systems, and the Two-Turns Penalty is replaced by the One-Turn Penalty. A yacht may choose either to:
 - a) take a One-Turn Penalty in accordance with rule 44.2; or
 - b) take a Scoring Penalty in accordance with rule 44.3.
- 13.4 A yacht that has taken a penalty shall complete an [online penalty acknowledgement form](#) or a paper form available from the Jury Secretary and submit/file it with the Jury Secretary no later than the end of protest time.

14 TIME LIMIT

- 14.1 The time limit for the first boat in each class to sail the course and finish is as follows:
 - a) For the Around-the-Island Race courses – 4 hours.
 - b) For Navigator courses – 4 hours.
 - c) For Drop Mark courses – 2 hours.
- 14.2 Yachts failing to finish within one hour after the first boat in its class sails the course and finishes for the Around the Island and Navigator races and within one half hour for the Drop Mark courses will be scored Time Limit Expired (TLE) and scored points as described in SI 16.4. This changes rules 35 and A4.

15 PROTESTS AND REQUESTS FOR REDRESS

- 15.1 It is requested that yachts intending to protest report both their intention and the yacht being protested to the Race Committee on the circle VHF channel immediately after finishing or withdrawing from the race.
- 15.2 Protests or requests for redress shall be submitted to the Jury Secretary in the SIYC Sailing Center as soon as possible, but not later than one hour after the Race Committee Signal Boat for that circle has docked either on the written protest form available from the Jury Secretary or on the [online protest form](#). The time limit for filing a protest will be posted on the Official Notice Board.
- 15.3 Protest notices will be posted as soon as possible on the Jury Notice Board.
- 15.4 Protest hearings will take place at the SIYC Sailing Center as soon as possible after the notices are posted. The Jury will attempt to hear protests in the order of receipt. Representatives of yachts who are parties to a hearing shall remain on call in the vicinity of the protest rooms.
- 15.5 When a yacht has been involved in an incident that may be subject to protest, it is her responsibility to check the protest notices at the end of the protest filing time to see if she is cited in a protest. Failure of any yacht to appear when called for a hearing will be considered by the Jury as grounds for proceeding under rule 63.3(b).
- 15.6 Rule 63.5 is changed by adding, “A protest involving contact may be heard by the Protest Committee even though the requirements of rule 61.1(a) and 61.3 have not been fulfilled.”
- 15.7 Breaches of SIs 4.5, 7, and 9.5 will not be grounds for a protest by a yacht. This changes rule 60.1(a).
- 15.8 On the last scheduled day of racing only, a written request for reopening a hearing shall be delivered to the Jury Secretary:
 - a) Within the protest time limit if the requesting party was informed of the Protest Committee’s decision on the previous day; or
 - b) No later than 30 minutes after the requesting party was informed of the Protest Committee’s decision on that day; or
 - c) If no races are held on the last scheduled day of racing, within one hour after racing has been abandoned. This changes rule 66.
- 15.9 On the last scheduled day of racing, a request for redress based on a Protest Committee decision shall be delivered in writing no later than 30 minutes after the decision was posted. This changes rule 62.2.

15.10 Decisions of a properly constituted international jury will be final as provided in rule 70.5.

16 SCORING

- 16.1 See SI 5. The Around-the-Island Race on Friday, August 4, will be scored separately from racing on Saturday and Sunday.
- 16.2 In the Two-Day Series, a yacht's series score will be the total of her race scores. There will be no drop race. This changes rule A2.
- 16.3 One race is required to be completed to constitute a series.
- 16.4 Yachts that have started and fail to finish within the time limit for any reason, shall, without a hearing, be scored by the Race Committee with points equal to the number of yachts in her class that have sailed the course and finished within the time limit, plus two. This changes rule A4.1, A4.2, and A5.
- 16.5 Teams competing for team trophies will be scored in accordance with the Notice of Race.
- 16.6 For scoring purposes, as needed, the distance used will be that as calculated by the Race Committee.

17 PRIZES

Prizes will be awarded as described in the Notice of Race.

18 NOTES

- 18.1 All times herein are Eastern Daylight times. Bearings are in degrees magnetic and are approximate. Distances used herein are expressed in nautical miles (when not otherwise defined) and are approximate.
- 18.2 Shelter Island Tides

Day	Date	High Tide	Height	Low Tide	Height
Friday	August 4	0905	2.2 ft.	1456	0.5 ft.
Saturday	August 5	0946	2.3 ft.	1540	0.5 ft.
Sunday	August 6	1025	2.4 ft.	1623	0.4 ft.

- 18.3 For further information please contact:

Shelter Island Yacht Club Sailing Center
Tel: 631-749-1829
Email: rc@siyc.com

SAILING INSTRUCTIONS

Appendix A – AROUND-THE-ISLAND RACE

Friday, August 4

A1 ORDER OF START

The intended order of start for the Around-the-Island Race will be included in the Race Committee's announcement on VHF Channel 72 at 1100. Classes may not start in numerical order. The Race Committee may combine two or more classes into one start by displaying multiple class flags at the Warning Signal. The Race Committee will endeavor to announce the next class(es) to start on VHF Channel 72.

A2 COURSES FOR AROUND-THE-ISLAND RACE

The flag(s) designating the course to be sailed will be displayed at Course Signals. The Race Committee will endeavor to announce the designated courses over VHF channel 72. Failure to make such an announcement shall not be grounds for redress. This changes rule 62.1(a).

A2.1 START

Between an Orange Flag on the Race Committee Boat and the course side of a buoy set in the vicinity of the Shelter Island Yacht Club. The location of the start will be broadcast by VHF Channel 72 at 0900 hours.

A2.2 WINDWARD MARK

In order to achieve a proper start, the Race Committee may elect to set a weather mark at a distance from the starting line. The bearing and distance to this weather mark will be displayed on the Race Committee Signal boat with a white board. A flag "W" (weather mark) will be displayed over a red flag (leave to port) or a green flag (leave to starboard) at least five minutes prior to the first warning signal.

A2.3 SHORTEN COURSE

The courses may be shortened at any course mark in accordance with Rule 32.

A2.4 COURSE "A" DESCRIPTION

Course "A" will be signaled by flag "Alpha" displayed five minutes before the class flag(s). Flag Alpha will remain displayed as long as classes sailing Course "A" have not started. From the start (or weather mark, if there is one) sail counter clockwise around Shelter Island to the finish. The following marks shall be left as indicated:

R "10" Greenport Channel	Starboard
G "11" Jennings Pt.	Port
R "12" Paradise Point	Starboard
R"16" Noyac Bay	Port
G "15" Tyndal Point	Starboard
N "8" 0.5nm south of Mashomack Pt	Port
N "6" Opposite Cedar Point	Port

N "4" Nicoll Point	Port
G "1" Coecles Harbor	Port
C "3" Greenport Channel	Port
G "7" Greenport Channel	Port

A2.5 COURSE "A2" DESCRIPTION

Course "A2" will be signaled by flag "Alpha" and white flag with a blue number 2 underneath displayed five minutes before the class flag(s). Flag Alpha will remain displayed as long as classes sailing Course "A2" have not started. From the start (or weather mark, if there is one) sail counter clockwise around Shelter Island to the finish. The following marks shall be left as indicated:

R "10" Greenport Channel	Starboard
G "11" Jennings Pt.	Port
R "12" Paradise Point	Starboard
R"16" Noyac Bay	Port
G "15" Tyndal Point	Starboard
N "8" 0.5nm south of Mashomack Pt	Port
N "6" Opposite Cedar Point	Port
N "4" Nicoll Point	Port
G "1" Coecles Harbor	Port
RW "N" Mo(A) WHIS	Port
R "2" Bell Greenport Channel	Starboard
G "7" Greenport Channel	Port

A2.6 COURSE "B" DESCRIPTION

Course "B" will be signaled by flag "Bravo" displayed five minutes before the class flag(s). Flag Bravo will remain displayed as long as Classes sailing Course "B" have not started. From the start (or weather mark, if there is one) sail clockwise around Shelter Island to the finish. The following government marks shall be rounded as indicated:

G "7" Greenport Channel	Starboard
C "3" Greenport Channel	Starboard
G "1" Coecles Harbor	Starboard
N "4" Nicoll Point	Starboard
N "6" Opposite Cedar Point	Starboard
N "8" 0.5nm south of Mashomack Pt	Starboard
G "15" Tyndal Point	Port
R"16" Noyac Bay	Starboard
R "12" Paradise Point	Port
G "11" Jennings Pt.	Starboard
R "10" Greenport Channel	Port

A2.7 COURSE "B2" DESCRIPTION

Course "B2" will be signaled by flag "Bravo" and white flag with a blue number 2 underneath displayed five minutes before the class flag(s). Flag Bravo will remain displayed as long as classes sailing Course "A2" have not started. From the start (or weather mark, if there is one) sail counter clockwise around Shelter Island to the finish. The following marks shall be left as indicated:

G "7" Greenport Channel	Starboard
R "2" Bell Greenport Channel	Port
RW "N" Mo(A) WHIS	Starboard
G "1" Coecles Harbor	Starboard
N "4" Nicoll Point	Starboard
N "6" Opposite Cedar Point	Starboard
N "8" 0.5nm south of Mashomack Pt	Starboard
G "15" Tyndal Point	Port
R"16" Noyac Bay	Starboard
R "12" Paradise Point	Port
G "11" Jennings Pt.	Starboard
R "10" Greenport Channel	Port

A2.8 FINISH

The finish will be between a Race Committee Boat with an orange staff and the course side of a buoy set in the vicinity of the mouth of Dering Harbor. The finish boat may be different from the start boat.

SAILING INSTRUCTIONS

Appendix B – NAVIGATOR RACES

Saturday - Sunday, August 5-6

B1 ORDER OF START

The intended order of start for the Navigator Races will be included in the Race Committee's announcement on the assigned VHF Channel prior to the first warning signal. Classes may not start in numerical order. The Race Committee may combine two or more classes into one start by displaying multiple class flags at the Warning Signal. The Race Committee will endeavor to announce the next class(es) to start on the assigned VHF Channel.

B2 START

Between an Orange Flag on the Race Committee Boat and the course side of an inflatable buoy. The designated Rendezvous location and circle will be broadcast by VHF Channel 72 at 0900 hours.

B3 WINDWARD MARK

- B.3.1 In order to achieve a proper start, the Race Committee may elect to set a weather mark at a distance from the starting line. The bearing and distance to this weather mark will be displayed on the Race Committee Signal boat with a white board. A flag "W" (weather mark) will be displayed over a red flag (leave to port) or a green flag (leave to starboard) at least five minutes prior to the first warning signal.
- B.3.2 The Race Committee may elect to set a long windward mark and a short windward mark. The distance displayed will be to the SHORT windward mark. The LONG windward mark will be on the same bearing at a distance of 0.5 NM beyond the short windward mark.
- B.3.3 If the flag "L" is displayed with the warning signal for a division, that division will use the LONG windward mark.
- B.3.4 If the flag "L" is not displayed at the warning signal for a division, that division will use the SHORT windward mark.
- B.3.5 The windward mark for a division may be used as a subsequent course mark for that division and will be designated as W with a P or S in the posted mark sequence for the course. The side on which W is to be left as a subsequent course mark might be different from the first rounding.

B4 SHORTEN COURSE

The courses may be shortened at any course mark in accordance with Rule 32.

B5 COURSE DESCRIPTIONS

The courses for each division will be configured by the Race Committee Signal Boat when it is on station at the starting location. These courses will be communicated from the Race Committee by white board on the stern of the Race Committee Signal boat and by transmission on the VHF Channel assigned to the designated Circle. Each course will be defined by the order marks are to be passed and the side on which each mark is to be left. It is anticipated that each course will be designed with the goal of having many points of sail. The marks to be used are described in **B7** and shown on the attached charts.

B6 FINISH

- B.6.1 The finish will be between a Race Committee boat with an orange staff and the course side of an inflatable mark. The last entry in the posted course will indicate the location of the finish which may be in the vicinity of the start, PC for Pipes Cove, YC for Shelter Island Yacht Club or any other mark selected by the Race Committee. The finish boat may be different from the start boat.

B.6.2 If a subsequent race is to be sailed, the finish line Race Committee Boat intends to fly Code Flag "R" with the Blue "On-Station" signal at the finish. If a Class Flag is displayed below Code Flag "R" the subsequent race is for that class(es) only. In addition, the Race Committee will attempt to announce a subsequent race on their respective circle VHF channel.

B7 MARKS

B7.1 GARDINERS BAY

B7.1.1 GOVERNMENT MARKS

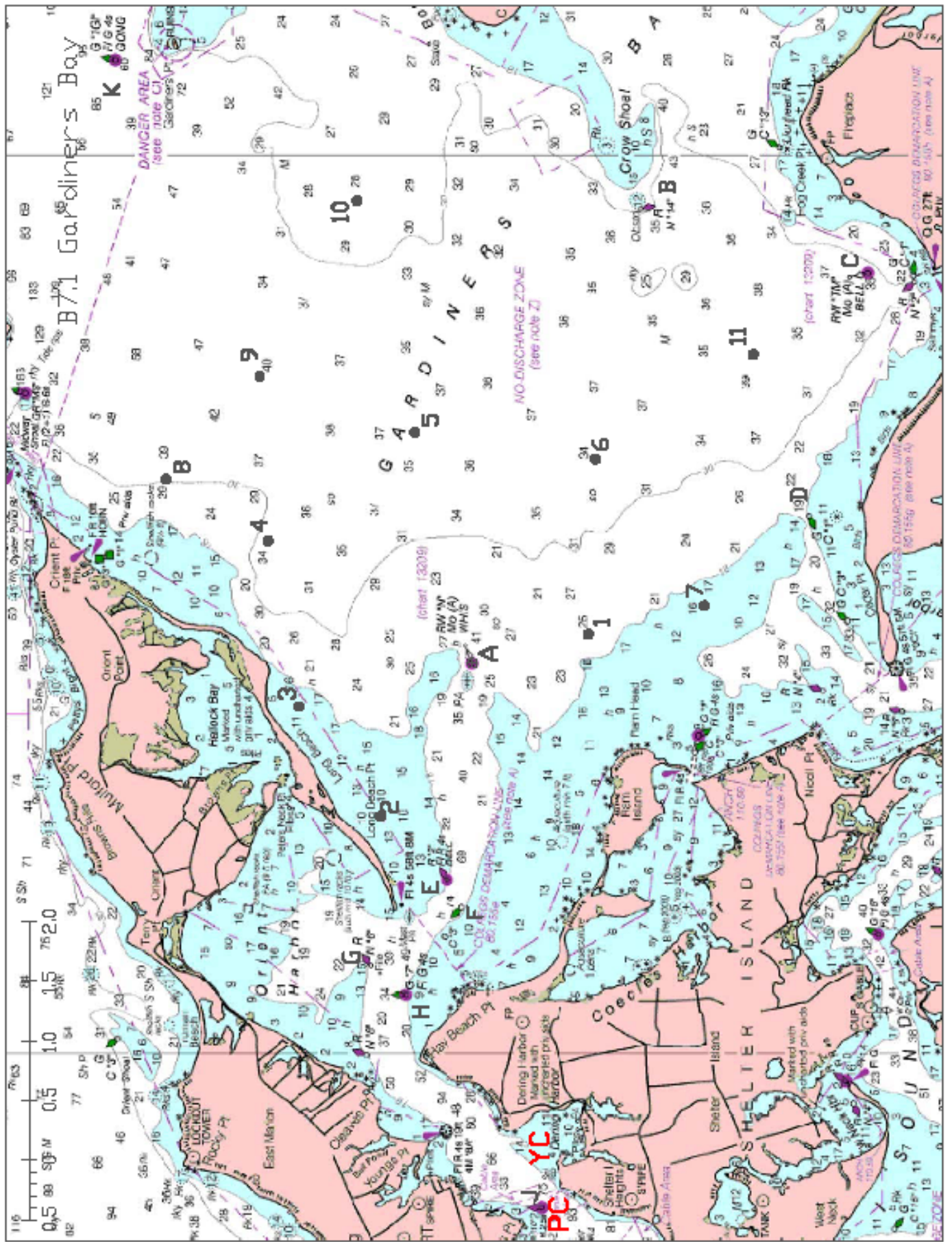
A	RW "N" Mo(A) WHIS 1 ½ miles NE Ram Island
B	N "14" Crow Shoal
C	RW "TM" Mo(A) Bell N of entrance to Three Mile Harbor
D	C "1" ENE of Cedar Point
E	Red FLR Bell "2" Entrance to Greenport Channel
F	C "3" Entrance to Greenport Channel off Cornelius Point
G	N "6" Orient Harbor
H	G "7" Fl G off Hay Beach
J	R "10" Fanning Point
K	G"1GI" Bell N of Gardiners Point Ruins

B7.1.2 DROP MARKS

Drop Marks will be inflatable marks positioned relative to RW "N" Mo(A) WHIS.

1	Race Marker 1 mile S (180 deg)
2	Race Marker 1.5 miles NW (315 deg)
3	Race Marker 1.5 miles N (000 deg)
4	Race Marker 2 miles NE (045 deg)
5	Race Marker 2 miles E (090 deg)
6	Race Marker 2 miles SE (135 deg)
7	Race Marker 2 miles S (180 deg)
8	Race Marker 3 miles NE (045 deg)
9	Race Marker 3 miles ENE (067.5 deg)
10	Race Marker 4 miles E (090 deg)
11	Race Marker 3.5 miles SE by S (146 deg)

ALL BEARING DIRECTIONS ARE MAGNETIC.



B71 Gardiners Bay

DANGER AREA
(see note C)
See note A

NO-DISCHARGE ZONE
(see note Z)

COUNTS DEMARCATION LINE
00 271 40 140 (see note A)

COUNTS DEMARCATION LINE
00 155 (see note A)

Scale bar:
0.5 1.0 1.5 2.0
0.5 1.0 1.5 2.0

0.5 1.0 1.5 2.0
0.5 1.0 1.5 2.0

0.5 1.0 1.5 2.0
0.5 1.0 1.5 2.0

0.5 1.0 1.5 2.0
0.5 1.0 1.5 2.0

0.5 1.0 1.5 2.0
0.5 1.0 1.5 2.0

0.5 1.0 1.5 2.0
0.5 1.0 1.5 2.0

0.5 1.0 1.5 2.0
0.5 1.0 1.5 2.0

0.5 1.0 1.5 2.0
0.5 1.0 1.5 2.0

0.5 1.0 1.5 2.0
0.5 1.0 1.5 2.0

0.5 1.0 1.5 2.0
0.5 1.0 1.5 2.0

0.5 1.0 1.5 2.0
0.5 1.0 1.5 2.0

0.5 1.0 1.5 2.0
0.5 1.0 1.5 2.0

0.5 1.0 1.5 2.0
0.5 1.0 1.5 2.0

0.5 1.0 1.5 2.0
0.5 1.0 1.5 2.0

0.5 1.0 1.5 2.0
0.5 1.0 1.5 2.0

0.5 1.0 1.5 2.0
0.5 1.0 1.5 2.0

0.5 1.0 1.5 2.0
0.5 1.0 1.5 2.0

0.5 1.0 1.5 2.0
0.5 1.0 1.5 2.0

0.5 1.0 1.5 2.0
0.5 1.0 1.5 2.0

0.5 1.0 1.5 2.0
0.5 1.0 1.5 2.0

0.5 1.0 1.5 2.0
0.5 1.0 1.5 2.0

0.5 1.0 1.5 2.0
0.5 1.0 1.5 2.0

0.5 1.0 1.5 2.0
0.5 1.0 1.5 2.0

0.5 1.0 1.5 2.0
0.5 1.0 1.5 2.0

0.5 1.0 1.5 2.0
0.5 1.0 1.5 2.0

0.5 1.0 1.5 2.0
0.5 1.0 1.5 2.0

0.5 1.0 1.5 2.0
0.5 1.0 1.5 2.0

0.5 1.0 1.5 2.0
0.5 1.0 1.5 2.0

116 082 94 66 77 54 34 29 20 15 10 5 3 2 1 0 1 2 3 4 5 6 7 8 9 10 11 12 13 14 15 16 17 18 19 20 21 22 23 24 25 26 27 28 29 30 31 32 33 34 35 36 37 38 39 40 41 42 43 44 45 46 47 48 49 50 51 52 53 54 55 56 57 58 59 60 61 62 63 64 65 66 67 68 69 70 71 72 73 74 75 76 77 78 79 80 81 82 83 84 85 86 87 88 89 90 91 92 93 94 95 96 97 98 99 100 101 102 103 104 105 106 107 108 109 110 111 112 113 114 115 116 117 118 119 120 121 122 123 124 125 126 127 128 129 130 131 132 133 134 135 136 137 138 139 140 141 142 143 144 145 146 147 148 149 150 151 152 153 154 155 156 157 158 159 160 161 162 163 164 165 166 167 168 169 170 171 172 173 174 175 176 177 178 179 180 181 182 183 184 185 186 187 188 189 190 191 192 193 194 195 196 197 198 199 200 201 202 203 204 205 206 207 208 209 210 211 212 213 214 215 216 217 218 219 220 221 222 223 224 225 226 227 228 229 230 231 232 233 234 235 236 237 238 239 240 241 242 243 244 245 246 247 248 249 250 251 252 253 254 255 256 257 258 259 260 261 262 263 264 265 266 267 268 269 270 271 272 273 274 275 276 277 278 279 280 281 282 283 284 285 286 287 288 289 290 291 292 293 294 295 296 297 298 299 300 301 302 303 304 305 306 307 308 309 310 311 312 313 314 315 316 317 318 319 320 321 322 323 324 325 326 327 328 329 330 331 332 333 334 335 336 337 338 339 340 341 342 343 344 345 346 347 348 349 350 351 352 353 354 355 356 357 358 359 360 361 362 363 364 365 366 367 368 369 370 371 372 373 374 375 376 377 378 379 380 381 382 383 384 385 386 387 388 389 390 391 392 393 394 395 396 397 398 399 400 401 402 403 404 405 406 407 408 409 410 411 412 413 414 415 416 417 418 419 420 421 422 423 424 425 426 427 428 429 430 431 432 433 434 435 436 437 438 439 440 441 442 443 444 445 446 447 448 449 450 451 452 453 454 455 456 457 458 459 460 461 462 463 464 465 466 467 468 469 470 471 472 473 474 475 476 477 478 479 480 481 482 483 484 485 486 487 488 489 490 491 492 493 494 495 496 497 498 499 500 501 502 503 504 505 506 507 508 509 510 511 512 513 514 515 516 517 518 519 520 521 522 523 524 525 526 527 528 529 530 531 532 533 534 535 536 537 538 539 540 541 542 543 544 545 546 547 548 549 550 551 552 553 554 555 556 557 558 559 560 561 562 563 564 565 566 567 568 569 570 571 572 573 574 575 576 577 578 579 580 581 582 583 584 585 586 587 588 589 590 591 592 593 594 595 596 597 598 599 600 601 602 603 604 605 606 607 608 609 610 611 612 613 614 615 616 617 618 619 620 621 622 623 624 625 626 627 628 629 630 631 632 633 634 635 636 637 638 639 640 641 642 643 644 645 646 647 648 649 650 651 652 653 654 655 656 657 658 659 660 661 662 663 664 665 666 667 668 669 670 671 672 673 674 675 676 677 678 679 680 681 682 683 684 685 686 687 688 689 690 691 692 693 694 695 696 697 698 699 700 701 702 703 704 705 706 707 708 709 710 711 712 713 714 715 716 717 718 719 720 721 722 723 724 725 726 727 728 729 730 731 732 733 734 735 736 737 738 739 740 741 742 743 744 745 746 747 748 749 750 751 752 753 754 755 756 757 758 759 760 761 762 763 764 765 766 767 768 769 770 771 772 773 774 775 776 777 778 779 780 781 782 783 784 785 786 787 788 789 790 791 792 793 794 795 796 797 798 799 800 801 802 803 804 805 806 807 808 809 810 811 812 813 814 815 816 817 818 819 820 821 822 823 824 825 826 827 828 829 830 831 832 833 834 835 836 837 838 839 840 841 842 843 844 845 846 847 848 849 850 851 852 853 854 855 856 857 858 859 860 861 862 863 864 865 866 867 868 869 870 871 872 873 874 875 876 877 878 879 880 881 882 883 884 885 886 887 888 889 890 891 892 893 894 895 896 897 898 899 900 901 902 903 904 905 906 907 908 909 910 911 912 913 914 915 916 917 918 919 920 921 922 923 924 925 926 927 928 929 930 931 932 933 934 935 936 937 938 939 940 941 942 943 944 945 946 947 948 949 950 951 952 953 954 955 956 957 958 959 960 961 962 963 964 965 966 967 968 969 970 971 972 973 974 975 976 977 978 979 980 981 982 983 984 985 986 987 988 989 990 991 992 993 994 995 996 997 998 999 1000

B7.2 PECONIC BAY

B7.2.1 GOVERNMENT MARKS

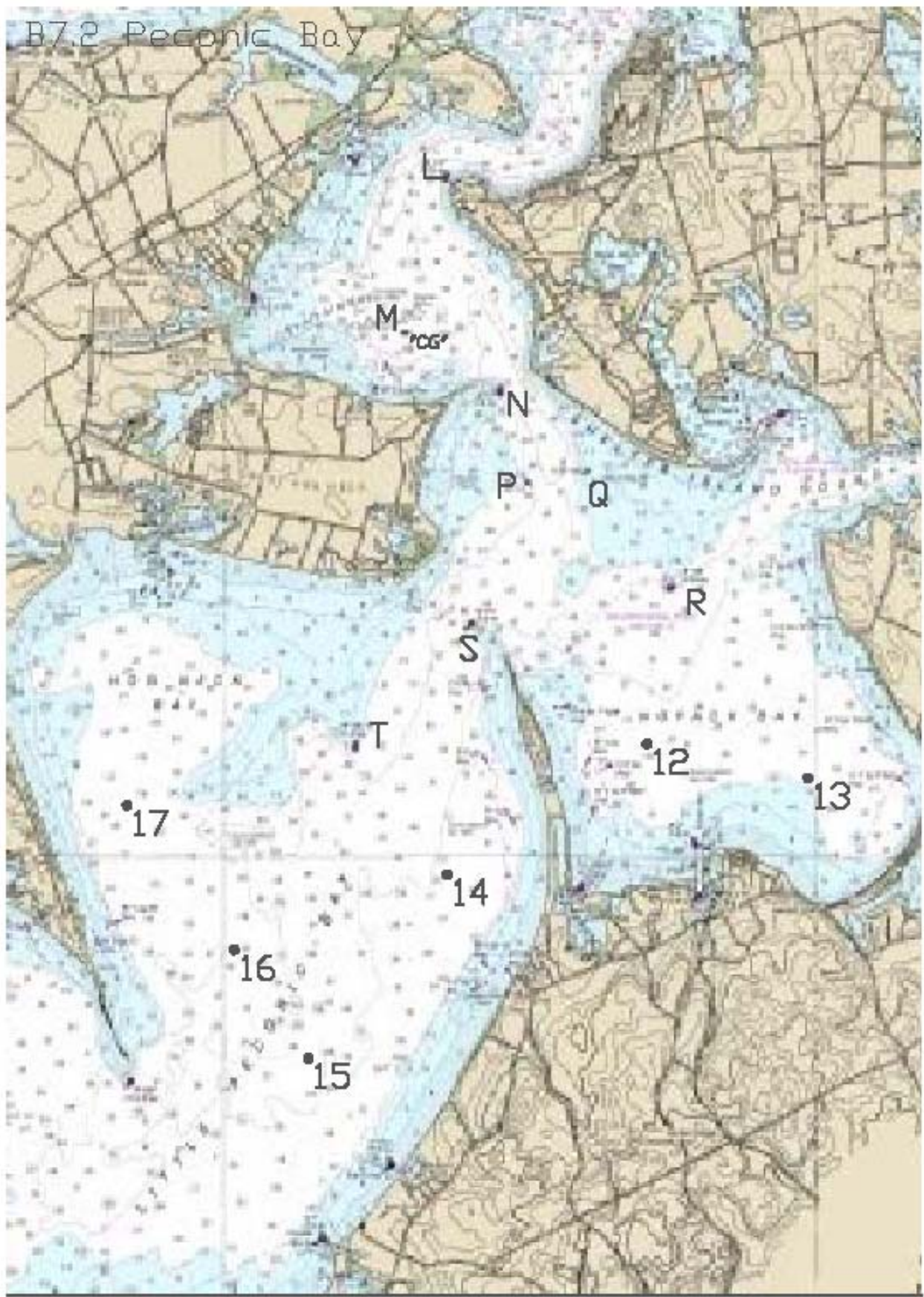
L	G "11" Jennings Point
M	"CG" about 0.7 miles NW (315 deg) from R "12" Paradise Point
N	R "12" Paradise Point
P	N "14" Great Hog Neck
Q	C "15" Black Dog Rock
R	R "16" Noyak Bay
S	G "17" Jessup Neck
T	R "18" Hog Neck Bay

B7.2.2 DROP MARKS

12	Race Marker 1 mile SSW (202.5 deg) from R "16" Noyak Bay
13	Race Marker 1.5 miles SSE (157.5 deg) from R "16" Noyak Bay
14	Race Marker 1 miles SSE (157.5 deg) from N "18" Hog Neck Bay
15	Race Marker 2 miles SSW (202.5 deg) from N "18" Hog Neck Bay
16	Race Marker 1.5 miles WSW (247.5 deg) from N "18" Hog Neck Bay
17	Race Marker 1.5 miles W (270 deg) from N "18" Hog Neck Bay

ALL BEARING DIRECTIONS ARE MAGNETIC

B7.2 Peconic Bay



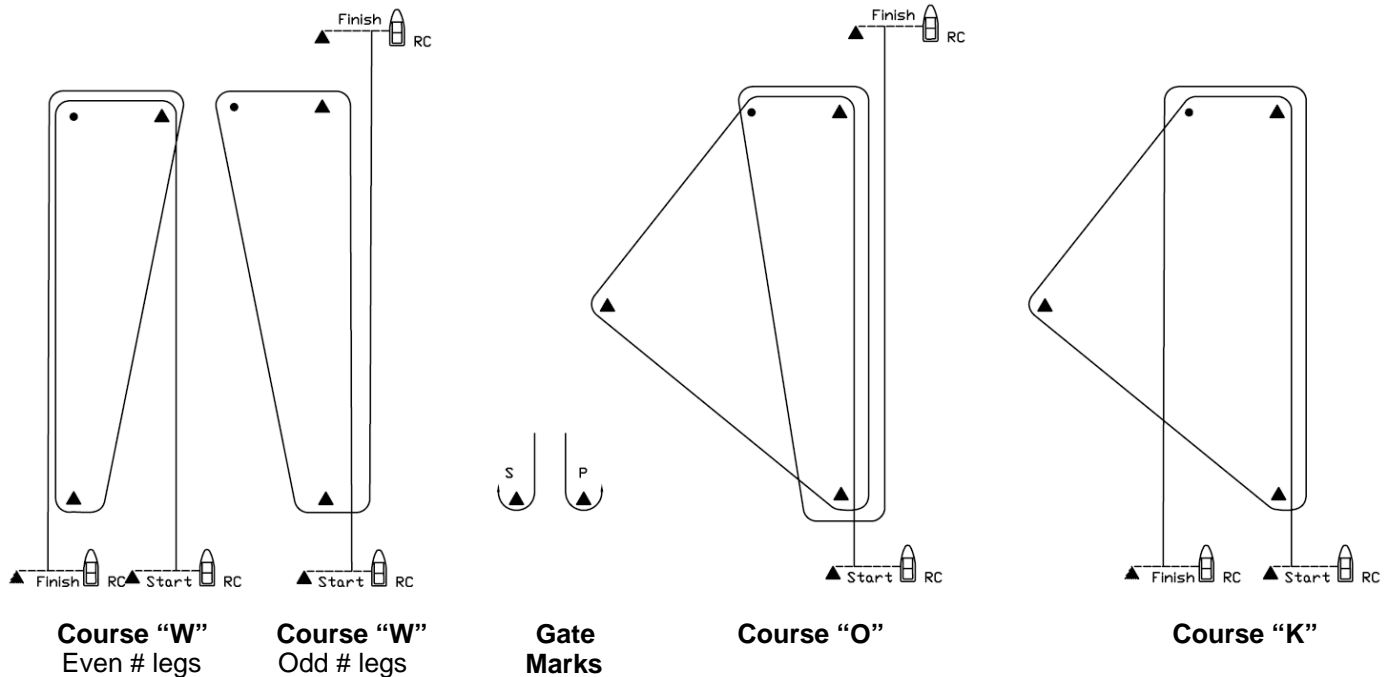
SAILING INSTRUCTIONS

Appendix C – DROP MARK RACES

Saturday - Sunday, August 5-6

C1 COURSES FOR DROP MARK RACES

C1.1 Course Diagrams



- C1.2 **Course "W"** is a Windward/Leeward course with a windward offset mark. A numeral pennant indicating the number of **LEGS** to be raced will be flown beneath Flag "W". The distance between the windward mark and the offset mark shall not count as a leg for the purposes of indicating the number of legs.
- C1.3 **Course "O"** is a Triangle/Windward/Leeward/Windward course.
- C1.4 **Course "K"** is a Triangle/Windward/Leeward course.
- C1.5 The leeward mark for Courses "W", "O", and "K" will be an inflatable mark(s) set approximately 0.10 NM to windward of the starting line. A gate mark may be used for Course "W".
- C1.6 The course designation will be indicated by a flag flown from the Race Committee Signal Boat. The distance and bearing to the windward mark will be displayed on the Race Committee Signal boat with a white board.
- C1.7 Rounding marks, including the windward offset mark, shall be rounded in order and always left to port, except that a gate, when used, shall be rounded as described in rule 28.1(c).
- C1.9 **Long Windward Mark:**
- For course "W" with an even number of legs, the Race Committee may set a long windward mark and a short windward mark.
 - The distance displayed will be to the SHORT windward mark. The long windward mark will be on the same bearing at a distance of 0.5 NM beyond the short windward mark.
 - If flag "L" is displayed below the course signals (see diagram on previous page), that class will use the LONG windward mark for each weather leg in that race. If flag "L" is NOT displayed below the course signals, that class will use the SHORT windward mark for each weather leg in that race.

This changes the diagrams in SI Appendix C1.1.

C2 MARKS FOR DROP MARK COURSES

C2.1 Marks will be inflatable buoys (except as noted) as follows:

<u>Circle</u>	<u>Original marks</u>	<u>Starting</u>	<u>Finishing</u>	<u>Change marks</u>
WHITE	Orange	White	Green	Black Band
BLUE	Yellow	White	Green	Black Band

C2.2 Offset marks will be small round pink buoys.

C3 COURSE CHANGE

C3.1 In addition to the requirements in rule 33, the Race Committee will attempt to announce any course change on their respective circle VHF channel. Failure to make such an announcement shall not be grounds for redress. This changes rule 62.1(a).

C3.2 The new mark will have a black band as described in SI Appendix C2.1.
For a subsequent change, the new mark will be the same as the original mark.

C4 THE FINISH

C4.1 The finishing line will be between a staff displaying a blue flag on a Race Committee Boat and the finishing mark.

- a) For Course "W", with an odd number of legs, and Course "O", the finish line will be located approximately 0.1 NM to windward of the windward mark.
- b) For Course "W", with an even number of legs, and Course "K", the finish line will be located approximately 0.1 NM to leeward of the leeward mark. See diagrams in SI Appendix C1.1.

C4.2 If a subsequent race is to be sailed, the finish line Race Committee Boat intends to Code Flag "R" with the Blue "On-Station" signal at the finish. If a Class Flag is displayed below Code Flag "R" the subsequent race is for that class(es) only. In addition, the Race Committee will attempt to announce a subsequent race on their respective circle VHF channel.

C4.3 In fog at the finish, the Race Committee Boat may ring a bell rapidly, for approximately 5 seconds, at intervals. The same Race Committee Boat may or may not start and finish each race.